

presents:

Conundrums in Neurorehabilitation

Perspectives and solutions in working with challenging behaviour and acquired brain injury

ON-DEMAND ONLINE RESOURCE PACKAGE

This includes 7 professionally filmed sessions, PDF copies of the slides and your CPD/APIL certificate for 5 points.

Cost: £199 + VAT

20% discount for NHS,
Statutory Services &
Charities



Sponsored by



5 Points



APIL
Accredited
Training

Organised by



**BOOK
NOW**

Conundrums in Neurorehabilitation

Perspectives and solutions in working with challenging behaviour and acquired brain injury

This pre-recorded online learning package includes professionally filmed sessions & PDF copies of all the slides.

The training is available as soon as you book!

The benefits of this course being online are:

- Complete the course in your own time
- Personalised CPD/APIL certificate for 5 points
- Unlimited time to access the resource
- Resources remain in your account forever to refer back to

Programme

Welcome from the conference sponsor

Dr Dimitrios Sampanis, Clinical Director, Home Rehab Therapists

Thamara Raju, Clinical Director, Home Rehab Therapists

Session 2

Managing the Unmanageable: solving conundrums in behaviour change following acquired brain injury

In this session, the presenters will set the broad context for the day by describing how behaviour support plans that draw from learning theory can be effectively applied in managing behavioural symptoms of neurobehavioural disability, including challenging behaviour. It will be argued that effective interventions are more likely to be accepted and consistently applied using the theoretical framework provided by neurobehavioural rehabilitation, as opposed to those that have not been conceived for application with people with acquired brain injury, including Positive Behaviour Support. In addition to using an appropriate theoretical framework, having a meaningful social context for neurorehabilitation to take place in, delivered by clinicians working as a transdisciplinary team within a "relentlessly positive" therapeutic climate, further supports delivery of effective interventions from learning theory and achievement of rehabilitation goals.

Nick Alderman, Senior Clinical Director, Head of Psychology & Consultant Clinical Neuropsychologist, Elysium Neurological Services and Honorary Professor, Swansea University

Professor Andrew Worthington, Consultant in Neuropsychology and Rehabilitation & Director, Headwise Ltd

Paul Mooney, Clinical Director, Elysium Neurological & Honorary Assistant Professor, University of Nottingham

Session 3

"Does the cost justify the outcome?" Is neurobehavioural rehabilitation even possible in the community?

Neurobehavioural rehabilitation has been proven to be a cost and clinically effective intervention for people with acquired brain injury. In this paper, we review the evidence base, the clinical application of neurobehavioural rehabilitation when working with individuals in community settings and discuss a case study to illustrate.

Dr Jenny Brooks, Consultant Clinical Psychologist, JB Psychology Services

Clark Gilkes, Associate Clinical Case Manager, Karen Burgin Ltd

Lauren Hurney, Partner, Irwin Mitchell

Sponsored by



5 Points



APIL
Accredited
Training

Organised by



**BOOK
NOW**

Conundrums in Neurorehabilitation

Perspectives and solutions in working with challenging behaviour and acquired brain injury

Session 4

Achieving successful outcomes for those with “no rehabilitation potential”

People with acquired brain injury and challenging behaviour can be excluded from rehabilitation settings, sometimes with it cited that there is “no rehabilitation potential”. Assessment of these individuals, looking beyond the behaviours, can help to ascertain that there is actually good potential for recovery. This session will draw upon case examples to discuss possible solutions to help teams achieve successful rehabilitation outcomes for people who have become excluded from rehabilitation services. It will be argued that once the impact of behaviours has been reduced, an individual can go on to achieve a number of goals within their rehabilitation.

Dr Richard Irwin, Consultant Clinical Neuropsychologist

Session 5

Thinking outside the Box: overcoming the challenges of creating neurobehavioural rehabilitation services

There are multiple conundrums and challenges that can impede utilisation of methods in the management of neurobehavioural disability. Examples include: consideration of legal and ethical frameworks; developing understanding with external stakeholders and caregivers; education, training and achieving consistency in delivery of interventions and cohesiveness within clinical teams responsible for their delivery; ensuring adequate oversight and monitoring; and creativity in enabling service users to achieve their goals. This session will demonstrate some of the ways these conundrums may be successfully resolved through consideration of a detailed case study presented within the wider context of these issues as they also impacted on development of a newly created neurobehavioral rehabilitation service.

Fiona Box, Executive Hospital Director, Moorlands Neurological Centre

Session 6

Lunch, networking & exhibition stands

Session 7

Energiser

Session 8

“Is anybody out there?” Commissioning ABI services to manage challenging behaviour

Clare Jones, Senior Complex Rehabilitation Case Manager, NHS England - Midlands

Trudi Massey, Complex Rehabilitation Case Manager, NHS England Specialised Commissioning

Session 9

Tea/coffee, networking & exhibition stands

Session 10

Good Teams Mind their GRRAACCCEEESSS-Addressing micro aggressions when working with challenging behaviours

Dr Nddi Boakye, Consultant Clinical Neuropsychologist, Clinical Psychologist & Couple Therapist, Head of Service for Clinical Health & Neuropsychology, Croydon University Hospital & Director, The Psych Practice Ltd

Session 11

“Which Button Do I Press?” Can digital health technology really help manage post-ABI behaviour change?

This session will focus on an overview of the work from Decently over the past 2 years on their new innovation Melo™ across NHS Inpatient and Private Healthcare settings. The session will also touch on other trends, opportunities and challenges when introducing DHTs into Neuro rehab.

James Burch, Co- Founder & James Chapman Co-Founder, Decently

Sponsored by



5 Points



APIL
Accredited
Training

Organised by



**BOOK
NOW**

Biographies



Paul Mooney BSc(Hons); MSc; CPsychol(Foren); AFBPsS; CSCi
Clinical Director, Elysium Neurological & Honorary Assistant Professor, University of Nottingham

Paul is Clinical Director for Elysium Neurological and Honorary Assistant Professor with the School of Medicine, University of Nottingham. He is a Consultant Forensic Psychologist by training with a longstanding interest in neuropsychology. He is a peer reviewer for a number of academic journals and acts as practice examiner and lectures on Doctoral and other postgraduate courses. He has also worked with the British Psychological Society (BPS) Divisions of Forensic Psychology and Neuropsychology on various panels and working groups regarding clinical practice.

He has experience working with people with a variety of presentations (eg, ABI, Neurodevelopmental Disorders, Personality Disorder and Mental Illness) across different care settings, including high, medium and low secure, locked rehabilitation and community services. He has experience of developing new services and is an advocate for formulation-led, person-centred care, with interests in behaviour support, social cognition and executive dysfunction.

Paul has a background in research, with a number of peer reviewed publications on a variety of subject areas including: formulation and risk assessment in ABI; Behaviour Support in Neurobehavioural Rehabilitation; the assessment and management of people with neurodevelopmental disorder and challenging/offending behaviour; Personality Disorder & Psychopathy; risk assessment in neurological and neurodevelopmental populations; social climate and culture; and sexual behaviour & offending.



Professor Nick Alderman
Senior Clinical Director, Head of Psychology & Consultant Clinical Neuropsychologist

Nick Alderman is Senior Clinical Director, Head of Psychology and Consultant Clinical Neuropsychologist at Elysium Neurological Services, Elysium Healthcare, UK and Honorary Professor at Swansea University, UK. He is acknowledged as an expert in neurobehavioural rehabilitation, having accrued over four decades experience in this field. He has combined successful careers in clinical and academic psychology, and has a proven track record in treatment innovation, service development, leadership, research and teaching. Nick was the first recipient of the inaugural NR Times 'Lifetime Contribution' award in 2023 in acknowledgement of his "...immense" contribution to neurobehavioural rehabilitation. A new book on this subject, "Managing challenging behaviour following acquired brain injury", edited by Nick and Professor Andrew Worthington, was published this year.

Sponsored by



5 Points


APIL
Accredited
Training

Organised by



**BOOK
NOW**

Biographies



Professor Andrew Worthington

Consultant in Neuropsychology and Rehabilitation & Director of Headwise Ltd

Professor Andrew Worthington is Director of Headwise Ltd which is an Independent provider of multi-disciplinary assessment and rehabilitation across the lifespan with families and individuals, including occupational health, return to work, fitness to practice and mental capacity.

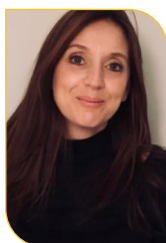
Honorary Professor jointly in Faculty of Medicine, Health and Life Science at Swansea University.

He is a Consultant Clinical Advisor to Voyage Care overseeing clinical issues in over 20 small/medium brain injury rehabilitation and care facilities across the country.

Former Programme director of MSc programmes in Brain Injury Rehabilitation/Case Management. He is involved in teaching and research in aspects of brain injury and rehabilitation, having presented at conferences in the UK and abroad.

For the past 25 years Professor Worthington has acted as an independent expert witness on brain injury, rehabilitation and post-traumatic stress conditions in personal injury, clinical negligence, family courts and criminal cases on a joint and single instruction basis. He prepares around 90 reports a year on children and adults.

Professor Worthington is involved in a number of research projects and has published many academic journal articles and book chapters.



Dr Jenny Brooks

Consultant Clinical Psychologist, JB Psychology Services

Dr Jenny Brooks, Consultant Clinical Psychologist has worked with people with acquired brain injuries (ABI) for over 15 years. Dr Brooks has supported children and adults with ABI and their families in inpatient, residential and community settings. Dr Brooks specialises in the assessment and treatment of neurobehavioural needs and has spoken at many conferences and published peer reviewed papers in this area.

Sponsored by



5 Points



APIL
Accredited
Training

Organised by



**BOOK
NOW**

Conundrums in Neurorehabilitation

Perspectives and solutions in working with challenging behaviour and acquired brain injury

Biographies



Clark Gilkes

Associate Clinical Case Manager, Karen Burgin Ltd

Commencing work at The Kemsley Unit in 1991, Clark now has 30 years' experience of working with brain injured clients, primarily with younger adults. He is a Registered Mental Health Nurse. Clark has managed specialist services and has worked as a key team member in setting up services. These include psychiatric intensive care units and residential rehabilitation services for brain injured clients.

Clark has worked as a case manager for brain injured clients for 15 years. He has spoken at several national conferences on the subject of case management.

Clark has case managed complex cases and has worked with brain injured client's who have mental health needs, forensic histories and drug and alcohol misuse issues. He is experienced in assessing client's needs and producing reports with recommendations and costings. He works on both pre and post settlement case. He has experience of providing evidence in court.

He has substantial experience of risk management and positive risk taking. He works closely with clients, and where appropriate their families, to enable them to achieve their goals and develop their independence.

Clark consults on projects for healthcare organisations in respect to development of services and risk management. He advises on the development of risk management policies and procedures and strategies for engaging client's with challenging behaviours. He speaks at national conferences and presents at seminars. He has experience of managing large rehabilitation and support teams.



Lauren Hurney

Partner, Irwin Mitchell

Lauren Hurney is a Partner in the London Medical Negligence team at Irwin Mitchell. She specialises in cases involving serious neurological injuries resulting from medical negligence. Lauren has been with Irwin Mitchell since 2010 and became a Partner in 2019. She is an APIL-accredited senior litigator and a member of the clinical negligence Action against Medical Accidents (AvMA) panel [1]. Client and peer testimonials highlight her compassionate and effective approach in handling cases with complex neurological issues

Sponsored by



5 Points



APIL
Accredited
Training

Organised by



**BOOK
NOW**

Biographies



Dr. Richard Irwin BSc (Hons), MSc (Hons), DClínPsy, PGDipNeuro, PGCert, CPsychol, SRCN
Consultant Clinical Neuropsychologist

Dr Richard Irwin is a Consultant Clinical Neuropsychologist. He worked at the Royal Hospital for Neuro-disability as the Clinical Programme Lead for the Neuro-behavioural Service. This Service utilised the Positive Behaviour Support approach to managing challenging behaviour in the context of acquired brain injury. Dr Irwin also previously held the position of Lead for Mental Capacity and Deprivation of Liberty Safeguards within the Hospital. Dr Irwin has wide ranging specialist experience in adult neuropsychology assessment and intervention and has worked across specialist neuro-rehabilitation services including a Level 1 rehabilitation service and a transitional rehabilitation service.

Dr Irwin has completed a range of further specialist training in Clinical Neuropsychology and obtained distinctions in a post-graduate Diploma in Clinical Neuropsychology and in Clinical Neuropsychology Practice. He also has a Masters in Sports Psychology. Dr Irwin is passionate about teaching and is an honorary associate lecturer at Royal Holloway, University of London and at the Institute of Psychiatry, Psychology & Neuroscience. He lectures on Traumatic Brain Injury and on Challenging Behaviour for individuals undertaking a Doctorate in Clinical Psychology. Furthermore, Dr Irwin has contributed to national guidance on Challenging Behaviour and on Best Interest Decision Making.



Fiona Box
Executive Hospital Director, Moorlands Neurological Centre

Fiona is a Registered Mental Health Nurse with over 27 years' experience within that field. She has worked with patients and their families in Neurorehabilitation, Autism, Forensic Older Adults and Mental Health Services, in a variety of positions from Staff Nurse to her current role as Executive Hospital Director with Elysium Neurological Services. Fiona is an accredited RAID tutor and supervises, supports and delivers training regarding management of complex challenging behaviour observed in the context of neurorehabilitation. She is passionate about developing innovative new services, one of which received a Headway accreditation of 'Outstanding'. In her current role, Fiona is providing operational and clinical leadership to ensure development of new and existing class-leading services.



Clare Jones
Senior Complex Rehabilitation Case Manager, NHS England - Midlands

Clare Jones is the Senior Complex Rehabilitation Case Manager for NHS England – Midlands, and leads the rest of the case management team for the region. The primary aim of the role is to increase access, reduce delays and optimise clinical pathways in specialised rehabilitation.

Clare graduated from the University of Newcastle-upon-Tyne in 2002 with a degree in Speech & Language Sciences and has since undertaken postgraduate qualifications in neurology, rehabilitation and project management. Clare has over twenty years' experience in NHS roles across the region including clinical specialist, managerial and commissioning posts.

Clare is committed to driving and delivering clinical and commissioning excellence for individuals with specialised rehabilitation needs in a timely, effective and patient centred manner.

Sponsored by



5 Points



APIL
Accredited
Training

Organised by



**BOOK
NOW**

Biographies



Trudi Massey

Complex Rehabilitation Case Manager, NHS England Specialised Commissioning

Trudi Massey is a Complex Rehabilitation Case Manager for NHS England Specialised Commissioning, working across the Midlands. Her current role also incorporates the Pathway Lead for Specialised Rehabilitation in Stoke-on-Trent.

Trudi has worked in Rehabilitation Medicine for twenty years and prior to becoming a Case Manager for NHS England she was a Specialist Rehabilitation Coordinator, working across services at the Haywood Hospital and the Major Trauma Centre at Royal Stoke University Hospital. Qualifying as a Registered Nurse (Adult) from Keele University in 2004, Trudi undertook a BSc (Hons) in 2006 there and has studied Health Promotion at Masters Level in 2010 at Birmingham University. Her most recent formal study has been the successful completion of the NHS Leadership Academy: Rosalind Franklin Award in 2022.

Trudi joined the Case Management team at NHS England in March 2018 and works alongside colleagues in streamlining specialised rehabilitation services regionally and nationally, striving for efficient and cost-effective delivery of services to patients with complex rehabilitation needs.



Dr Ndidi Boakye

Consultant Clinical Neuropsychologist, Clinical Psychologist & Couple therapist, Head of Service for Clinical Health & Neuropsychology, Croydon University Hospital & Director for The Psych Practice Ltd

Dr Ndidi Boakye completed her doctorate in Clinical Psychology at Salomons in 2008 and subsequently went on to specialise in Clinical Neuropsychology. She completed an MSc in Clinical Neuropsychology at the University of Nottingham in 2012, and went on to obtain the Qualification in Clinical Neuropsychology QICN in 2014. She has over 20 years' experience in the NHS and private sector working with neurological conditions. Dr Boakye works part time in the NHS as a Consultant Clinical Neuropsychologist in London and part time in independence practice. She is an ordinary member of the Division of Neuropsychology Executive Committee BPS.

Dr Boakye is also a qualified couple therapist and EMDR practitioner with a special interest in working in Cognitive Rehabilitation, Distressed Couples, Adjustment issues, Multicultural Neurorehabilitation, Vocational rehabilitation and process issues in team working. She is a national and international speaker, guest lecturer at UK universities and published in numerous journals and books. As a lead editor and author, she has recently published a book Systemic Approaches to Brain Injury Treatment: Navigating Contemporary Practice (2022).

Sponsored by



5 Points



APIL
Accredited
Training

Organised by



**BOOK
NOW**

Biographies



James Chapman
Co-Founder, Decently

Decently is a Manchester based digital health tech company on a mission through their digital application Melo™ to help clinicians make earlier sense of complex patient behaviours through innovative tech, big data and AI.

With over a decade's worth of experience in health tech - across industry, consultancy and the NHS - James has a strong track record of creating award-winning tech-for-good products that have made a significant social impact.

Prior to setting up Decently, he was MD of a successful digital health startup focussed on falls prevention & is an alumni of the NHS Digital Health Accelerator.



James Burch
Co-Founder, Decently

James has 20+yrs experience of working in digital SME's across both Education and Health sectors and has a good appreciation of the opportunities and challenges this new way of working presents across workforce, clinical / ethical, governance and technical standpoints.

Prior to Decently, James was MD of an Education Technology company providing applications and data solutions to schools, local authorities, Multi Academy Trusts and the Department for Education.

Sponsored by



5 Points



APIL
Accredited
Training

Organised by



**BOOK
NOW**



Specialised Complex Neurological Rehabilitation & Care

We are committed to providing the highest standard of rehabilitation and care, encompassing the physical, psychological, emotional, behavioural and social needs of the people we support. We work closely with each person, their family, friends and commissioners to maintain important relationships, set realistic goals and achieve the best outcomes.



Pathways

The spectrum of Elysium Neurological services across the UK covers the following five pathways for inpatient, residential care and respite stays for men and women over the age of 18.



Neurorehabilitation

Assessment, rehabilitation, flexible packages for ABI or neurological conditions



Complex Physical Conditions

– as a result of a neurological problem
Including disorders of consciousness, spinal injury, tracheostomy care, ventilation and complex stroke



Neurobehavioural

Specialised behavioural programmes including people who may be detained under the Mental Act 1983 (amended 2007)



Neuroprogressive Conditions

Including Huntington's Disease, Motor Neurone Disease, Multiple Sclerosis and Parkinson's Disease



Complex Dementias

Including Frontotemporal, Pick's, Lewy Body, Korsakoff, young-onset or vascular

Care centres

Adderley Green – Stoke-on-Trent, Staffordshire
Badby Park – Daventry, Northamptonshire
Stanley House & Bowley Court – Bosbury, Herefordshire
The Bridge – Middlesbrough, North Yorkshire
The Dean – Gloucester, Gloucestershire
Gardens and Jacobs – Sawbridgeworth, Hertfordshire

Hospitals

St Neots Neurological Centre
– St Neots, Cambridgeshire
The Avalon Centre
– Swindon, Wiltshire

Get in touch

24hr Referrals and enquiries

T: 0800 218 2398 | E: referrals@elysiumhealthcare.co.uk





HOME REHAB
— THERAPISTS —
EXCLUSIVE REHABILITATION

The UK's foremost specialist interdisciplinary team for neurological and musculoskeletal rehabilitation.

We work closely with case managers and solicitors in order to progress our clients in their rehabilitation journey. We have a thorough understanding of the legal process and have built great working relationships over the years.

We offer the very best in at-home rehabilitation, including:

- Physiotherapy
- Occupational Therapy
- Speech and Language Therapy
- Neuropsychology
- Career Counselling

Our specialists provide rehabilitation for a range of neurological and musculoskeletal conditions, including:

- Stroke
- Traumatic Brain Injury
- Spinal Injury
- Parkinson's Disease

We offer bespoke packages to meet the needs of our clients, from providing one therapeutic format alone to delivering the full range of therapies as an interdisciplinary team.

- We cover all of London and the home counties.

www.homerehabtherapists.co.uk