

COST: £30 + VAT

15% discount for NHS,
Statutory Services & Charities

PRE RECORDED ONLINE TRAINING

presented by

BOOK NOW



DR. CHRISTIAN FRENCH
CONSULTING OPTOMETRIST



VISION & BRAIN INJURY

The symptoms, what can be done and who can help?

This online training resource includes a video of the presentation and PDF copy of the slides.

The benefits of this course being online are:

- Complete the course in your own time
- Personalised CPD & APIL certificate for 2 points
- Unlimited time to access the resource
- Resources remain in your account forever to refer back to

Sponsored by



2 points



Accredited
by APIL
Training

Organised by





VISION & BRAIN INJURY

BOOK NOW

Online Training

More than 50% of brain injuries result in issues with eyesight and the visual system.

The online training will cover the effects of TBI and ABI on the visual system. This will include a brief overview of the general anatomy of the visual system, followed by how brain injury can manifest visually. Statistics will be given to illustrate the prevalence of vision problems among the brain injury community.

The session will explore the range of therapies and techniques available to investigate, quantify and help manage visual and systemic symptoms encountered in brain injury. There will be a summary of care pathways available in the UK, both within the NHS and privately, giving details of what services can be accessed and the range of therapy available.

The session will conclude with some case studies to illustrate the impact of visual rehabilitation on brain injury patients.

LEARNING OBJECTIVES

To ensure attendees can:

1. Be able to apply the basic anatomy of the visual system to the frequency and range of visual symptoms experienced following brain injury.
2. Be able to enquire about visual symptoms when working with a brain injury patient and understand when a referral to a neuro-optometrist may be warranted.
3. Have an awareness of the range of therapies and management strategies available to a neuro-optometrist working with a brain injury patient.
4. Be able to understand the care pathways available to a brain injury patient experiencing visual symptoms through the NHS and privately, with the strengths and limitations of each.
5. Be able to relate the theoretical principles of visual rehabilitation to a series of case studies featuring patients with symptoms encountered following brain injury.

The benefits of this course being available after the event are:

- Complete the training in your own time
- Personalised CPD/APIL certificate for 2 points
- Unlimited time to access the resource
- Resources remain in your account forever to refer back to

Please use the book now link for the online resource package.

BOOK NOW

Sponsored by



2 points



Accredited
by APIL
Training

Organised by





VISION & BRAIN INJURY

BOOK NOW

Online Training

BIOGRAPHY

Dr Christian French

PhD MOptom (Hons) MCOptom

Optometrist & Owner, Dr Christian French
Consulting Optometrist and Specialist Optometrist,
Kettering General Hospital

Dr French qualified as an optometrist in 2013, having attained a First Class Masters in Optometry. After spending some time in high street practice, he moved to working at a clinically-focussed independent opticians in Market Harborough, Leicestershire. During this time he developed his skills in vision therapy, alongside completing his PhD in ocular haemodynamics at Aston University. Dr French worked for several years as a Senior Lecturer in Anatomy & Physiology for the Optometry Masters programme at the University of Hertfordshire. He now divides his time between working as a Specialist Optometrist in the Paediatric Ophthalmology and Eye Casualty clinics at Kettering General Hospital and working as a private consulting optometrist with a special interest in vision therapy and neuro-optometry, particularly with those having experienced brain injury. He is a member of the British Association of Behavioural Optometrists as well as the College of Optometrists in Vision Development (COVD) and the Neuro-Optometry Rehabilitation Association (NORA); the latter two organisations being based in the United States. Dr French is currently one of only five optometrists on the NORA register in the UK. He has lectured both nationally and internationally and is the current chairman of the Association for Independent Optometrists and Dispensing Opticians in the UK.



Sponsored by



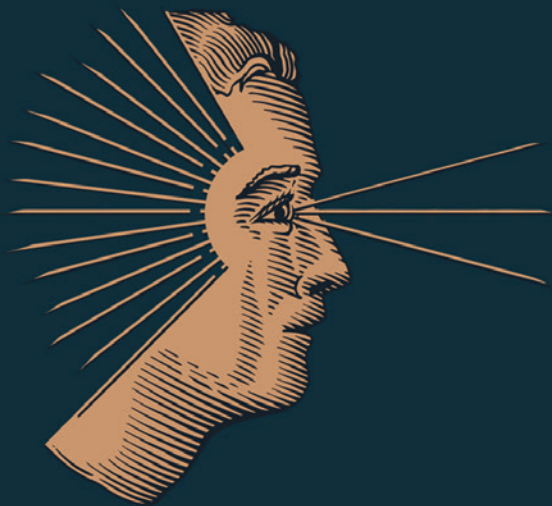
2 points



Accredited
by APIL
Training

Organised by





DR. CHRISTIAN FRENCH

PhD MOptom (Hons) MCOptom

CONSULTING OPTOMETRIST

Vision & Brain Injury

More than 50% of brain injuries result in issues with eyesight and the visual system. This can include:

Blurry vision • Double vision • Difficulties reading

Light sensitivity • Dizziness & balance problems

Peripheral vision problems • Depth perception issues

Discomfort in crowds • Difficulties with visual processing

A detailed neuro-optometric assessment can help identify, quantify and offer support for these symptoms and more.

For full assessments, reports and therapy options contact:

60 Main Street, Kibworth Harcourt, Leicester, LE8 0NQ
07971 295152

@theconsultingoptometrist

www.consultingoptometrist.co.uk



Specialised Complex Neurological Rehabilitation & Care

We are committed to providing the highest standard of rehabilitation and care, encompassing the physical, psychological, emotional, behavioural and social needs of the people we support. We work closely with each person, their family, friends and commissioners to maintain important relationships, set realistic goals and achieve the best outcomes.



Pathways

The spectrum of Elysium Neurological services across the UK covers the following five pathways for inpatient, residential care and respite stays for men and women over the age of 18.



Neurorehabilitation

Assessment, rehabilitation, flexible packages for ABI or neurological conditions



Complex Physical Conditions

– as a result of a neurological problem
Including disorders of consciousness, spinal injury, tracheostomy care, ventilation and complex stroke



Neurobehavioural

Specialised behavioural programmes including people who may be detained under the Mental Act 1983 (amended 2007)



Neuroprogressive Conditions

Including Huntington's Disease, Motor Neurone Disease, Multiple Sclerosis and Parkinson's Disease



Complex Dementias

Including Frontotemporal, Pick's, Lewy Body, Korsakoff, young-onset or vascular

Care centres

Adderley Green – Stoke-on-Trent, Staffordshire
Badby Park – Daventry, Northamptonshire
Stanley House & Bowley Court – Bosbury, Herefordshire
The Bridge – Middlesbrough, North Yorkshire
The Dean – Gloucester, Gloucestershire
Gardens and Jacobs – Sawbridgeworth, Hertfordshire

Hospitals

St Neots Neurological Centre
– St Neots, Cambridgeshire
The Avalon Centre
– Swindon, Wiltshire

Get in touch

24hr Referrals and enquiries

T: 0800 218 2398 | E: referrals@elysiumhealthcare.co.uk

