



## Rising To The Challenge:

Managing the diverse challenges in the field of brain injury



### PRE-RECORDED ONLINE LEARNING PACKAGE

This includes 7 professionally  
filmed sessions and PDF  
copies of the slides

**£125 + VAT**

**This pre-recorded online learning package includes professionally  
filmed sessions & PDF copies of all the slides  
The training is available as soon as you book!**

The benefits of this course being online are:

- Complete the course in your own time
- Personalised CPD certificate for 5.5 points
- Unlimited time to access the resource
- Resources remain in your account forever to refer back to

**BOOK  
NOW**

**20% discount for NHS, Statutory Services & Charities**

Organised by



5.5 Points



Accredited  
by APIL  
Training

Sponsored by





## Specialised Complex Neurological Rehabilitation & Care

We are committed to providing the highest standard of rehabilitation and care, encompassing the physical, psychological, emotional, behavioural and social needs of the people we support. We work closely with each person, their family, friends and commissioners to maintain important relationships, set realistic goals and achieve the best outcomes.



### Pathways

The spectrum of Elysium Neurological services across the UK covers the following five pathways for inpatient, residential care and respite stays for men and women over the age of 18.



#### Neurorehabilitation

Assessment, rehabilitation, flexible packages for ABI or neurological conditions



#### Complex Physical Conditions

– as a result of a neurological problem  
Including disorders of consciousness, spinal injury, tracheostomy care, ventilation and complex stroke



#### Neurobehavioural

Specialised behavioural programmes including people who may be detained under the Mental Act 1983 (amended 2007)



#### Neuroprogressive Conditions

Including Huntington's Disease, Motor Neurone Disease, Multiple Sclerosis and Parkinson's Disease



#### Complex Dementias

Including Frontotemporal, Pick's, Lewy Body, Korsakoff, young-onset or vascular

#### Care centres

**Adderley Green** – Stoke-on-Trent, Staffordshire  
**Badby Park** – Daventry, Northamptonshire  
**Stanley House & Bowley Court** – Bosbury, Herefordshire  
**The Bridge** – Middlesbrough, North Yorkshire  
**The Dean** – Gloucester, Gloucestershire  
**Gardens and Jacobs** – Sawbridgeworth, Hertfordshire

#### Hospitals

**St Neots Neurological Centre**  
– St Neots, Cambridgeshire  
**The Avalon Centre**  
– Swindon, Wiltshire

### Get in touch

24hr Referrals and enquiries

T: 0800 218 2398 | E: [referrals@elysiumhealthcare.co.uk](mailto:referrals@elysiumhealthcare.co.uk)



## Pre-recorded online learning package

### Session 1 - 52 minutes

#### **"I don't have time to fill that in": challenges and opportunities in outcome measurement**

Everybody involved in neurorehabilitation, including recipients, their families, friends, clinicians, service managers and commissioners, has an interest in learning about the difference it makes. The nature of this curiosity and questions asked vary depending on who is asking. Diverse enquiries encompass the extent neurorehabilitation impacts on increasing individual autonomy and independence, social roles and responsibilities, on professional competence, research and development, effectiveness of services, and value for money. Use of standardised outcome measures make a meaningful contribution to providing answers to these questions. Whilst there are several well-known instruments that can help fulfil this function, a range of issues mitigate that influence the extent to which services have a policy that ensures outcomes are routinely captured. Elysium Neurological Services have an ongoing strategy to ensure a basket of agreed outcome measures is routinely completed as part of routine clinical activity within each of its five care pathways. Drawing from this experience and detailed examples from neurobehavioural rehabilitation, this presentation will consider the range of challenges that limit the extent to which services measure effectiveness using standardised outcome measures, and how these might be transformed into new opportunities.

**Professor Nick Alderman, Clinical Director, Neurobehavioural Rehabilitation Services, Elysium Neurological**

### Session 2 - 44 minutes

#### **Managing Post Traumatic Amnesia (PTA) and Challenging Behaviour following a neurological episode in an Acute Setting.**

This session will provide attendees with further information and understanding about PTA and challenging behaviours, and psychologically-informed ways in which these difficulties can be assessed, formulated, and intervened with.

**Dr Alistair Teager, Consultant Clinical Neuropsychologist, Manchester Centre for Clinical Neurosciences**

### Session 3 - 40 minutes

#### **Neurobehavioural Rehabilitation in the Community**

This presentation will explore the opportunities and challenges of delivering neurobehavioural rehabilitation in the community with people with acquired brain injury. Best practice, case examples and practical solutions to overcome challenges will be discussed.

**Dr Jenny Brooks, Consultant Clinical Psychologist & Owner, JB Psychology Services & Clark Gilkes, Associate Clinical Case Manager, Karen Burgin Ltd**

### Session 4 - 46 Minutes

#### **Evaluating defendants with traumatic brain injury in the criminal justice system**

Traumatic Brain Injury (TBI) is a leading cause of death and disability globally, often resulting in long-term cognitive and emotional consequences for survivors. The prevalence of TBI in prison populations is also high, yet little is known about how key decision-makers in the legal system evaluate such defendants and the potential impact of TBI on sentence recommendations. Given that the effects of TBI are often hidden, with no visible, physical markers of disability, it is possible that TBI-related behaviour may therefore be misunderstood and attributed to other causes in this context. For example, a lack of understanding and misconceptions around the long-term consequences of TBI may lead decision-makers in the legal system to overlook or underestimate the impact of the TBI on the defendant. To explore these possibilities, this presentation will present the outcomes from a series of studies exploring traumatic brain injury in criminal sentencing, including exploration of the effects of injury presentation on sentencing

**Dr Claire Williams, Associate Professor, School of Psychology, Faculty of Medicine, Health and Life Science, Swansea University**

### Energiser Session

This is a fun music session used to energise the delegates post lunch.

### Session 5 - 38 minutes

#### Innovative use of legal service to enhance rehab outcomes

In this presentation, Laura will be discussing the litigation process after a TBI. The claim can be used to generate funds (interim payments) to pay for rehabilitation for our clients. That is the main benefit of such claims. Laura will explore a case study where rehabilitation outcomes are being achieved through working in more collaborative ways with insurers and clinicians alike and then will look at instances where rehabilitation has perhaps been delivered by clinicians in a more creative way to keep our clients engaged and motivated.

**Laura Middleton-Guerard, Partner, Irwin Mitchell**

### Session 6 - 32 minutes

#### Facing difficult life and death decisions on behalf of a loved one with a Disorder of Consciousness – the changes to the law regarding CANH

This presentation will cover changes in law and practice since the Supreme Court Case of Re Y in 2018, which confirmed that court applications are not mandatory before withdrawing clinically assisted nutrition and hydration from patients in minimally conscious or vegetative states. It will cover the national guidance on clinically assisted nutrition and hydration (British Medical Association and Royal College of Physicians endorsed by the General Medical Council) published shortly after Re Y and describe (a) cases in which the withdrawal decision was made and implemented without court applications; and (b) court hearings concerning cases where there was disagreement between the parties as to whether continuing clinically assisted nutrition and hydration was in the person's best interests.

**Professor Celia Kitinger, Honorary Professor at Cardiff University in the School of Law and Politics**

### Session 7 - 31 minutes

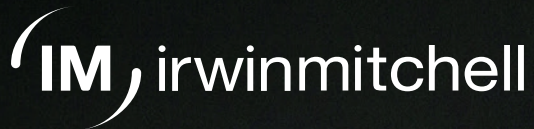
#### Character Building: Is There A Place For Positive Psychology In Neuro Rehabilitation?

Neurorehabilitation inevitably engenders a focus on regaining previous levels of functioning. This may implicitly reinforce notions in service users that progress, for them, depends entirely on the re-establishment of abilities that underpinned their former sense of self. This presentation outlines some thoughts on the challenges this can pose for psychological adjustment and shares some of the theoretical constructs underpinning work being done at Adderley Green Centre to support brain-injured individuals to integrate their altered capabilities into an adapted post-injury self-identity. The emphasis is shifted away from heightened focus on past and future self and associated discrepancies. The individual is supported to identify and better understand their present values and character strengths. These characteristics are then engaged in ways that promote acceptance and wellbeing in the 'here and now' of their changing circumstances.

**Dr Darren Perry, Consultant Clinical Psychologist, Elysium Neurological**







Expert Hand. Human Touch.

Patience and  
understanding  
turned despair  
into positivity.

That was the  
human touch  
that mattered.

Sophie, our client.

Our legal and financial experts understand the impact of a brain injury. We'll help you receive the best possible support, medical care and rehabilitation. We really get to know you, so you can get the most out of life.

Get in touch to see how we can help.

To find out more visit **[irwinmitchell.com](https://www.irwinmitchell.com)**

## Biographies



**Paul Mooney BSc(Hons); MSc; CPsychol(Foren); AFBPsS; CSci**  
**Clinical Director for Service Development & Improvement, Elysium Neurological Services, Assistant Professor, School of Medicine, University of Nottingham, Visiting Fellow, School of Psychology, University of Lincoln**

Paul is Clinical Director for Service Development & Improvement with Elysium Neurological and holds positions as Assistant Professor with the School of Medicine, University of Nottingham and Visiting Fellow with the School of Psychology, University of Lincoln. He is a peer reviewer for a number of journals, and also lectures and supports students on Doctoral and other postgraduate courses.

He has experience working with people with a variety of presentations across different care settings, as well supporting the development of new services. Paul is an advocate for formulation-led, person-centred care and has interests in behaviour support and executive dysfunction.

He has a background in research, with a number of peer reviewed publications on a variety of subject areas including the assessment and management of people with neurodevelopmental disorder and offending behaviour; Personality Disorder & Psychopathy; risk assessment in neurological and neurodevelopmental populations; social climate and culture; and sexual behaviour & offending.



**Professor Quazi Haque, Executive Medical Director, Elysium Healthcare**

Professor Quazi Haque is Executive Medical Director for Elysium Healthcare and has extensive experience working across the NHS and Independent sector. He is Professor of Mental Health at the University of London. Elysium is an active organizational member of the Mental Health Network, working in collaboration with NHS providers to provide services for adults and young people. Quazi was recently Chair of the Quality Network for NHS and IS providers at the Royal College of Psychiatrists Centre for Quality Improvement. In June 2021, he became President of the International Association of Forensic Mental Health Services.



## Biographies



### **Professor/Yr Athro Nick Alderman BA (Hons) MAppSci PhD CPsychol CSci FBPSS**

Professor Nick Alderman is Clinical Director, Neurobehavioural Rehabilitation Services, Elysium Neurological, part of Elysium Healthcare. He is acknowledged internationally as one of the foremost experts in neurobehavioural rehabilitation, having over three decades experience in this field. This year, he was the recipient of the prestigious 'Award for Distinguished Contribution to Practice' from the British Psychological Society, an annual mid-to-late career honour, recognising his outstanding and lasting contribution to neurobehavioural rehabilitation.

Nick has combined successful careers in both clinical and academic psychology, and has a proven track record in treatment innovation, service development, leadership, research and teaching. Previously he held senior posts at St Andrew's Healthcare (Kemsley Unit), the Brain Injury Rehabilitation Trust, Partnerships in Care and Priory Healthcare. He is Honorary Professor at Swansea University and Visiting Professor at the University of the West of England; and previously a Company Director and Chair of the Independent Neurorehabilitation Providers Alliance (INPA) 'Research & Outcomes' group, and Chair of the East Midlands Acquired Brain Injury Forum. Nick has published numerous journal papers and book chapters; he has created neuropsychological tests, observational recording measures and outcome measures used in neurorehabilitation services across the world.

During his career, Nick has been the recipient of a number of honours in addition to his 2020 Distinguished Contribution award. In 2002, he was awarded a Fellowship of the British Psychological Society in recognition of his contribution to neurobehavioural rehabilitation. In 2014 he was a finalist in the LaingBuisson Independent Healthcare Awards 'Outstanding Contribution' category; joint winner of The Association for Psychological Therapies 'Awards for Excellence in Risk Assessment and Management'; and recipient of the prestigious United Kingdom Acquired Brain Injury Forum 'Stephen McAleese Award for Inspiration by an individual in the field of acquired brain injury' in recognition of his work in successfully reducing restrictive interventions in neurobehavioural rehabilitation. In 2016, Nick was joint recipient of the Association for Psychological Therapies 'Annual Award for Excellence in Working with Challenging Behaviour'. Nick is the academic lead for the Elysium Psychology Graduate Academy Programme, which aims to help equip Psychology graduates fulfil career aspirations in training to become clinical and forensic psychologists.

Outside of work Nick is a keen dog owner and prides himself on being an amateur musician of 'questionable talent'.



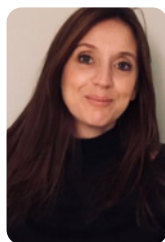
### **Dr Alistair Teager, Consultant Clinical Neuropsychologist, Manchester Centre for Clinical Neurosciences**

Alistair a Consultant Clinical Neuropsychologist working at Manchester Centre for Clinical Neurosciences (MCCN). He is the neuropsychology lead for acute neurorehabilitation, and his team were heavily involved in providing inpatient psychological support for those brought to Salford Royal following the Manchester Arena Attack. Alistair does inpatient and outpatient work, and has research interests in emergency preparedness, major trauma, digitisation of clinical practice, and rare neurological disorders. Alistair did his Bachelor's degree in Psychology at Liverpool, before doing a Master's degree in Performance Psychology at Edinburgh. He then went on to do the Doctorate in Clinical Psychology at Manchester, and the Postgraduate Diploma in Neuropsychology at Glasgow. Alistair has also completed the British Psychological Society's Qualification in Clinical Neuropsychology and is on the Specialist Register of Clinical Neuropsychologists. Outside of "neuro", Alistair likes rugby, mountain biking, late 90s dance music, and talking about his dog.

Twitter: @ajteager

Researchgate: [https://www.researchgate.net/profile/Alistair\\_Teager](https://www.researchgate.net/profile/Alistair_Teager)

## Biographies



### **Dr Jenny Brooks, Consultant Clinical Psychologist & Owner**

Dr Jenny Brooks is a Clinical Psychologist. She has worked within the field of Neurobehavioural rehabilitation for many years, across a variety of settings, including specialist inpatient services and now within the community. Dr Brooks has spoken at many conferences and published within the areas of risk management and the clinical application of neurobehavioural rehabilitation with people with acquired brain injury.



### **Clark Gilkes, Associate Clinical Case Manager, Karen Burgin Ltd**

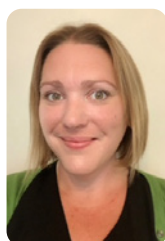
Commencing work at The Kemsley Unit in 1991, Clark now has 30 years' experience of working with brain injured clients, primarily with younger adults. He is a Registered Mental Health Nurse. Clark has managed specialist services and has worked as a key team member in setting up services. These include psychiatric intensive care units and residential rehabilitation services for brain injured clients.

Clark has worked as a case manager for brain injured clients for 15 years. He has spoken at several national conferences on the subject of case management.

Clark has case managed complex cases and has worked with brain injured client's who have mental health needs, forensic histories and drug and alcohol misuse issues. He is experienced in assessing client's needs and producing reports with recommendations and costings. He works on both pre and post settlement case. He has experience of providing evidence in court.

He has substantial experience of risk management and positive risk taking. He works closely with clients, and where appropriate their families, to enable them to achieve their goals and develop their independence.

Clark consults on projects for healthcare organisations in respect to development of services and risk management. He advises on the development of risk management policies and procedures and strategies for engaging client's with challenging behaviours. He speaks at national conferences and presents at seminars. He has experience of managing large rehabilitation and support teams.



### **Dr Claire Williams, Associate Professor, School of Psychology, Faculty of Medicine, Health and Life Science, Swansea University**

Dr Claire Williams (BSc [Hons], MSc, PhD) is an Associate Professor and clinically applied researcher at Swansea University. Specialising in the field of acquired brain injury, her principal research interests include the neurobehavioural legacies of brain injury, perceptions and misconceptions surrounding brain injury, the impact of brain injury on emotional processing and regulation, and decision making in the criminal justice system for defendants who have sustained a traumatic brain injury. She also has a wealth of experience developing specialist tools for use in brain injury assessment and rehabilitation, including the 'St Andrew's – Swansea Neurobehavioural Outcome Scale'.

In addition to her academic and Associate Professor role at Swansea University, she also holds several affiliated roles, including Honorary Senior Research Fellow with Elysium Neurological, and serves as a committee member for the South Wales Acquired Brain Injury Forum. With the latter, she has been working with the United Kingdom Acquired Brain Injury Forum on the recently published 'Acquired Brain Injury and Neurorehabilitation in Wales: Time for Change' 2021 report'. Finally, she has received research funding from a number of sources and funding bodies, has published many academic papers/reports/ book chapters, and has active research collaborations with both researchers and clinicians across a number of clinically applied areas.



## Biographies



### **Laura Middleton-Guerard, Partner, Irwin Mitchell**

Laura joined Irwin Mitchell as a solicitor in September 2007. She became an Associate in September 2011, a Senior Associate in 2017, and a Partner in 2018.

Laura and her team assist clients who've sustained life-changing injuries as a result of road traffic collisions, accidents at work or incidents on premises. Laura typically represents clients who've suffered brain injuries or severe orthopaedic injuries. She has specific expertise in cases where children and young adults have been injured.

Laura's main focus is to engage with the Defendant insurers as soon as possible so the legal claim can be used to fund a client's rehabilitation and maximise recovery. The team's aim is to put a care package in place together with all the recommended therapies in order to restore our client's quality of life as soon as possible.

Laura is a member of APIL and an accredited Senior Litigator. She holds APIL's specialist Brain Injury accreditation and is one of their assessors for that accreditation.

Laura was a Trustee for Headway North West London (Brent and Harrow) for 4 years and in addition sat on the Board of Roadpeace, the national road safety charity for 8 years.



### **Professor Celia Kitzinger, Honorary Professor at Cardiff University in the School of Law and Politics**

Celia Kitzinger is Honorary Professor in the School of Law and Politics at Cardiff University and co-director of both the Coma and Disorders of Consciousness Research Centre and the Open Justice Court of Protection Project. Connect with her on Twitter @KitzingerCelia



### **Dr Darren Perry, Consultant Clinical Psychologist, Elysium Neurological**

Dr Darren Perry is a Consultant Clinical Psychologist and the Psychology Lead at Adderley Green Care Centre. Prior to being appointed by Elysium in 2019, Darren worked for 20 years in NHS Neuropsychology, Physical Health and Older Adult Mental Health Services. Previous NHS positions include Head of Psychological Services and Clinical Director of Specialist Services. He has held honorary lecturer positions at The University of Staffordshire and Keele University. The consistent theme across Darren's clinical experiences has been a focus on psychological adjustment to changes in neurological and physical health. Darren co-developed and delivers a dementia training programme which won the UK National Dementia Congress 'Best Dementia Training Initiative' award in 2020 and he also delivers specialist Acquired Brain Injury training alongside MDT colleagues at Adderley Green.